

# EVERET

*ALL FOR AUTO*

**ITEM NO:EE-OK680**

**USER MANUAL**



**KEEP THE MANUAL NEAR THE MACHINE ALL TIME AND MAKE SURE ALL USERS HAVE READ THIS.**

**FOLLOW THE INSTRUCTIONS CAREFULLY TO GRANT THE MACHINE A CORRECT FUNCTION AND LONG SERVICE LIFE.**

**EAE Automotive Equipment Company Limited**

The manufacturer keeps the rights to improve the contents in this manual.

Tel: +86-21-32500750  
Fax: +86-21-32500785  
[Http://www.eae-ae.com](http://www.eae-ae.com)  
[sales@eae-ae.com](mailto:sales@eae-ae.com)

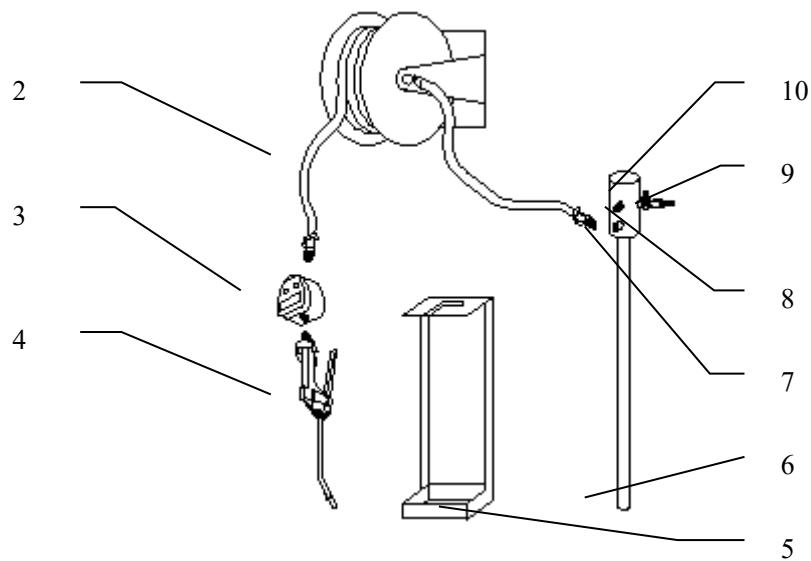
---

### i .Description

Our company produce all kinds of air operated draining oil machine. Adopt to Italia advanced technology, pressing the air as power, the air operated pump drain all kinds of oil by the cylinder move up and down as well as the soil receiver suction end. The machine is a new drain and suction fluids equipment which is abroad used in vehicle industrial, machinery industrial and agricultural machinery and so on.

The feature is: it is suitable for work place that requires guard against explode because it adopts to pressed air as power and separate from electricity. The integrate design of cylinder and valve make it operates easily with high efficiency and low labor, safety and environment protection.

### ii . The equipment's structure



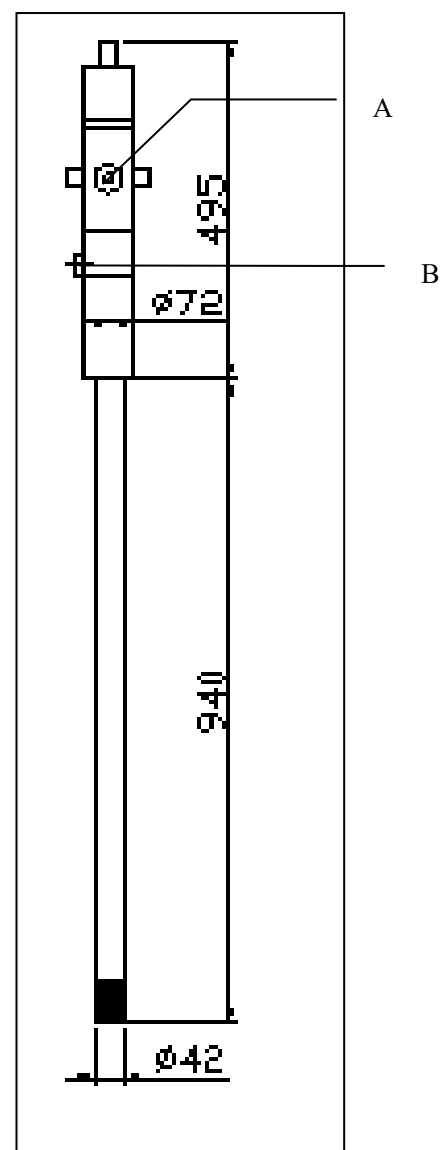
1. Hose reel	2. Long hose	3. Electronic oil meter	4. Oil gun
5. Oil bar	6. Oil inlet	7. Oil outlet	8. Pressure meter
9. Swift connector	10.Adjusting pressure valve	11. Pump tap	12. Short hose

## ii . Standard fittings

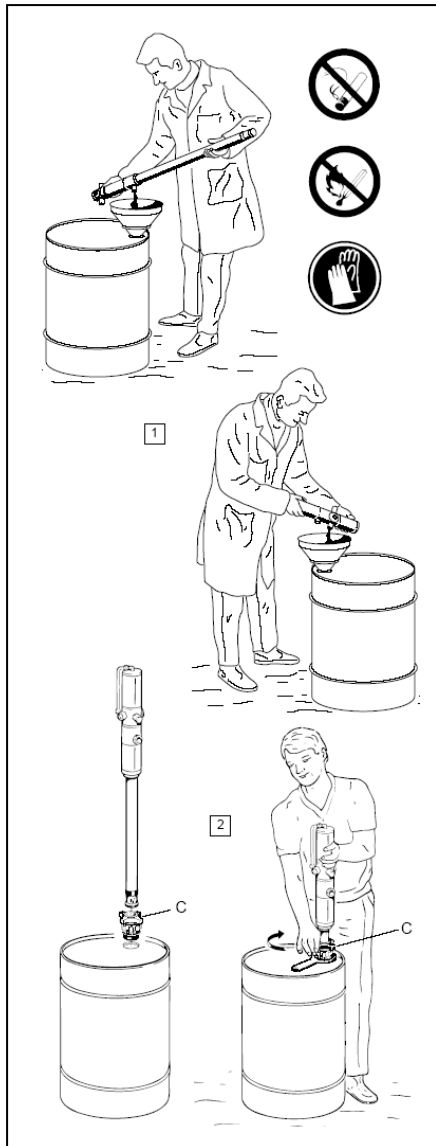
● Hose reel with 10M hose	1 set
● 5:1 Air operated pump	1 set
● Electronic oil meter	1 set
● Oil gun	1 set
● Oil bar	1 set
● Adjusting pressure valve assembly	1 set

## iii. Technique data

Compression ratio	5:1
Air inlet connection	G1/4
Work pressure	5 bar
Speed of transferring oil	10-18L/min
Scope of extracting oil	240SAF
Length of pump	940mm
Air consumption	230L/MIN
Diameter of oil outlet	G1/2
Max. pressure	7 bar
Temperature	-10-50°C
Suitable for drums	180-220kg
Outer diameter of pump	42mm
Diameter of hose	G3/8
Length of long hose	10M
Length of short hose	1.5M
Scope of work temperature of electronic oil meter	-10-50°C
Scope of fluid of electronic oil meter	0-30L/min
The discrepancy of electronic oil meter	±0.5%



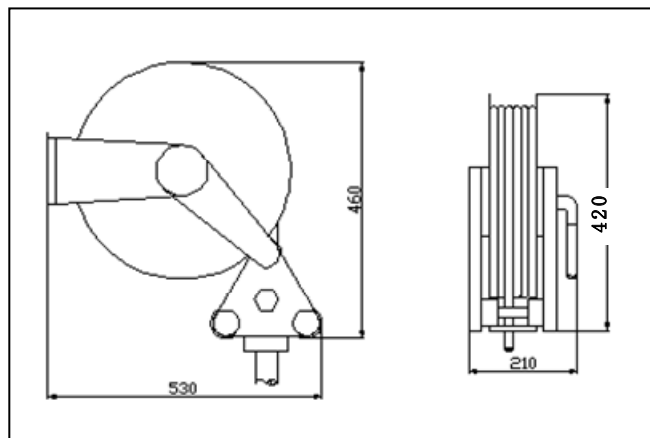
#### iv. Preparation before working



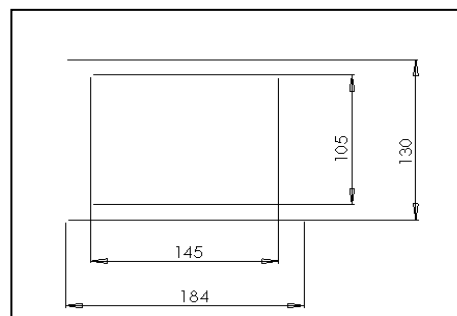
Clean the pump before it works, clear up all the dirt during the transporting. Add pure lubricating oil into the air inlet and turn it properly to make the oil in the cylinder equably, then put the air inlet aim at oil tank and pour it out (see picture 1), make sure all the lubricating oil fluid out to avoid it spray out from the muffler when the pump works.

1. No smoking in the work place
2. No fire
3. Wear protection clothes and glove when operating
4. Add lubricating oil regularly when operating

Fix the hose reel onto the wall. The feature size is as following:



The fitting size of hose reel is as following:  
(it must be tighten by M10 expanding nut  
when fitting).



#### V . Operating process

1. Connect the electronic oil meter gun to the hose reel according to the equipment's structure, then fit the oil gun before the meter. Connect the short hose on the hose reel to oil outlet B. If the short hose is not long enough, the customer can lengthen the hose based on the requirement, the connect screw thread is G1/2. (Note: if any leak in the connection, seal it with material).
2. Insert the pump into the tank vertically and switch the clamp on the pump and fix it onto the tank tightly. The outer screw thread of the clamp is G2.
3. Connect the pure compressed air into the swift connector, the work pressure is 5 bar, it has been adjusted in the factory.
4. The pump begins to work after the compressed air into the cylinder. The pump will not work when the pressure reaches balancer.
5. Pull out the long hose on the hose reel to do long-distance work. Take the hose, the clamp will separate from the reel and reel will run round at the pull, when the hose reaches proper situation, stop pulling the hose when the clamp and the reel will produce noise "ka ka", discharge the pull, the clamp will lock onto the reel under the spring force, then the reel won't run round again.
6. Check the electronic oil meter, press "reset", make the display to be "0", put the oil gun aim at the place that need dispense oil, press the handle on the gun to begin the dispensing oil work. The quantity of dispensing oil will display on the meter. The "total" key means the total quantity of dispensing oil.
7. When dispensing oil finish, pull the long hose with force to make the clamp separate from the reel thoroughly, discharge the pull, the reel will run round back

---

under the inner spring force and the hose will go back onto the reel, when it finishes, see process 5, lock the clamp onto the reel.

8. Take away the compressed air inlet hose, put the oil gun aim at the tank, press the handle on the oil gun again to discharge the pressure in the gun.
9. Hang the meter and gun onto the oil bar.

Note: do not put the muffler aim at peoples to avoid the oil fog spray out onto the clothes.

#### vi. The maintenance

Keep the equipment be good position and do proper maintenance work could lengthen the product's use time, and can improve the work efficiency.

1. Filter the compressed air to avoid the dirt in the air goes into the pump and damage the valve and cylinder.
2. The compressed air can not exceed 7kg, to avoid the equipment over loading and effects the high pressure hose's use life.
3. It is not allowed to bend the hose and press it with heavy things to avoid damage.
4. Close the air inlet ball valve or discharge the swift connector when the equipment do not work, drain out the oil in the gun and discharge the pressure in the equipment to lengthen the high pressure hose's use life.
5. Add lubricating oil into the pump regularly. Drop the pure oil from the air inlet when the equipment works 8 hours or before work. It will spray out oil fog from the muffler when the pump begins to work after connecting air. Note: keep away from the muffler.
6. Choose proper tools to disassemble the parts when repair the equipment to avoid damage the parts.
7. Do not keep the equipment working when the oil in the tank is not enough to avoid the cylinder heat and damage the parts.

- 
8. Clean the equipment regularly, disassemble the gun tap on the gun, clean it with pure oil several times to wash out the dirt, and keep the oil in the tank clean.
  9. Be careful when using the electronic oil meter to avoid damage.
  10. Protect all the parts to avoid human damage.



We won't be responsible if accident happens because do not operate the equipment according to this operation instruction or human damage.